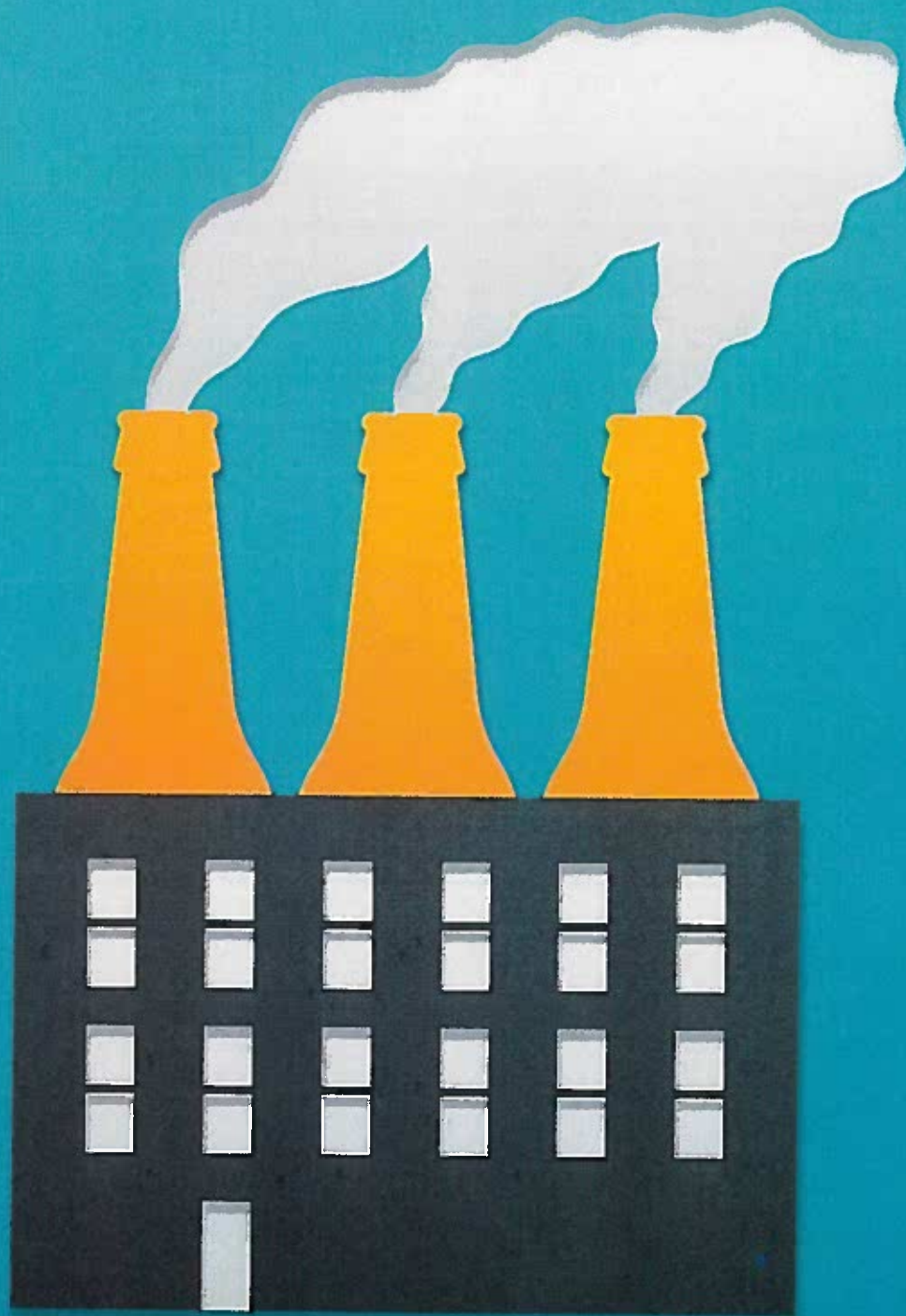


SWEAT



FROM ASSEMBLY LINE
TO PICKET LINE, IT'S
MORE THAN JUST A JOB

JAN.18
!FEB.10

KALITA
HUMPHREYS
THEATER

THE INDUSTRIOUS
DALLAS
THEATER
CENTER

THE INDUSTRIOUS DALLAS THEATER CENTER

SWEAT BY Lynn Nottage

WITH

Tyrees Allen
Ace Anderson
Kenajuan Bentley
Kyle Ignecci
Liz Mikel
Christopher Llewyn Ramirez
Jon Shaver
Sally Nystuen Vahle
Barbra Wengerd

DIRECTED BY

Tim Bond

SCENIC DESIGN

William Bloodgood

COSTUME DESIGN

Lydia Tanji

LIGHTING DESIGN

Joyce Liao

ORIGINAL MUSIC AND SOUNDSCAPE DESIGN

Michael Keck

PROJECTION DESIGN

Shawn Duan

HAIR AND MAKE-UP DESIGN

Leah J. Loukas

STAGE MANAGER

D. Christian Bolender

PRODUCTION MANAGER

Phil Baranski

PRODUCER

Sarahbeth Grossman

CASTING

Binder Casting

Chad Eric Murnane, CSA

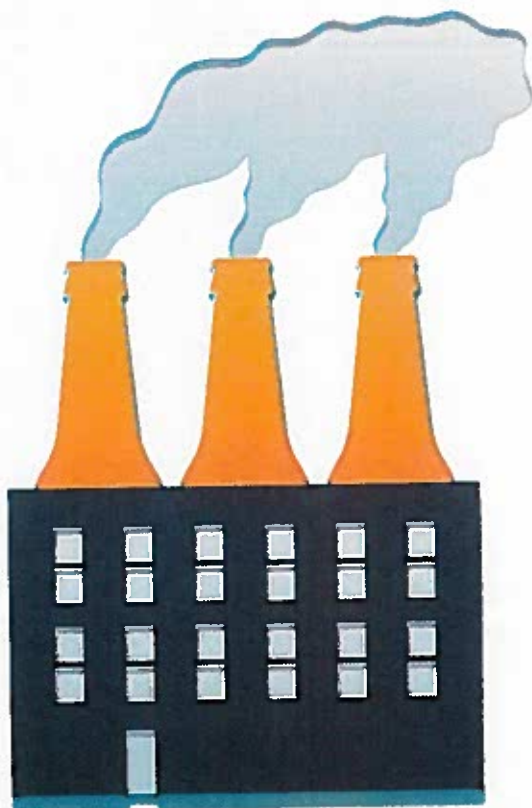
Dallas Theater Center's Production Staff is responsible for the sets, costumes, lighting, props, furniture, scenic painting, sound, special effects and wigs used in this production.

Co-commissioned by Oregon Shakespeare Festival's American Revolutions: The United States History Cycle And Arena Stage. World premiere produced by the Oregon Shakespeare Festival. SWEAT was first presented in New York by The Public Theater (Oskar Eustis, Artistic Director; Patrick Willingham, Executive Director). Originally produced on Broadway by Stuart Thompson and Louise L. Gund. SWEAT is presented by special arrangement with Dramatists Play Service, Inc., New York.

ASSISTANT PRODUCING PARTNERS

Husch Blackwell
Robert J. Tonti

Kevin Moriarty, *ENLOE* | ROSE ARTISTIC DIRECTOR
Jeffrey Woodward, *MANAGING DIRECTOR*



CAST, IN ORDER OF APPEARANCE

Evan TYREES ALLEN*
 Jason KYLE IGNECZI*
 Chris ACE ANDERSON**
 Stan JON SHAVER*
 Oscar CHRISTOPHER LLEWYN RAMIREZ**
 Tracey SALLY NYSTUEN VAHLE**
 Cynthia LIZ MIKEL**
 Jessie BARBRA WENGERD*
 Brucie KENAJUAN BENTLEY*

CREATIVE SUPPORT

Dialect Coach ANNE SCHILLING
 Fight Coordinator U. JONATHAN TOPPO
 Assistant Director TANNER SMITHSON
 Assistant Lighting Designer JORDAN SMITH
 Assistant Projection Designer and Programmer CAROLINE TREWET
 Fight Captain D. CHRISTIAN BOLENDER*

STAGE MANAGEMENT

Stage Manager D. CHRISTIAN BOLENDER*
 Assistant Stage Manager EMILY BURKE*
 Production Assistant LAURA BERRIOS

Time: 2000 / 2008 Place: Reading, Pennsylvania

Sweat will be performed with one 15-minute intermission.



The Director is a member of the
**STAGE DIRECTORS AND CHOREOGRAPHERS
 SOCIETY**, a national theatrical labor union.



The scenic, costume, lighting, sound
 and projection designers in LORT
 Theatres are represented by United
 Scenic Artists, Local USA-829 of
 the IATSE.



* Member of Actors' Equity
 Association, the Union of
 Professional Actors and Stage
 Managers in the United States.

• Member, Diane and Hal Brerley
 Resident Acting Company

This theater operates under an agreement with Actors' Equity Association,
 the Union of Professional Actors and Stage Managers in the United States.
 Dallas Theater Center is a member of the League of Resident Theaters,
 a consortium of Theatre Communications Group (TCG), the national
 organization for the nonprofit professional theater, and Veeva Dallas.

LORT
 LEAGUE OF RESIDENT THEATRES